


# Eclipse ImmersoJet Burners

Model IJ-4

Data sheet Edition 09.18

Version 3

| Parameter  | Blower Size   |                                     |                             |
|--|---|-------------------------------------|-----------------------------|
| Blower Type  | Low Pressure<br>Packaged<br>Blower  | High Pressure<br>Packaged<br>Blower | Remote Blower               |
| Maximum Input, Btu/h (kW)  | 800,000<br>(234.5)  | 1,000,000<br>(293.1)                | 1,800,000<br>(527.5)        |
| Minimum Input On-Ratio, Btu/h (kW)   | 100,000<br>(29.3)   | 100,000<br>(29.3)                   | 100,000<br>(29.3)           |
| Air Inlet Pressure at Maximum Input, "w.c. (mbar)<br><i>Air pressure at burner inlet (Tap "A")</i> | 6.7 (16.7)  | 10.5 (26.2)                         | 33 (82.2)                   |
| Blower Motor, Hp (kW)  | 0.5 (0.37)  | 1.0 (0.75)                          | As Specified                |
| Main Gas Pressure Supplied to Regulator, "w.c. (mbar)  | 12.0 - 55.0<br>(29.9 - 137.0)   | 15.0 - 55.0<br>(37.4 - 137.0)       | 38.0 - 83.1<br>(94.7 - 207) |
| Tube Back Pressure, "w.c. (mbar)   | 2.0 (4.9)   | 3.8 (9.5)                           | 12.2 (30.4)                 |
| Weight, lbs (kg)   | 115 (52)  | 120 (54)                            | 75 (34)                     |
| CO Emissions, ppm  | <100  | <100                                | <100                        |
| Piping   | NPT or BSP  |                                     |                             |
| Flame Detection  | Flamerod or UV Scanner  |                                     |                             |
| Fuels <sup>1, 2</sup><br><i>For any other mixed gas, contact Eclipse, Inc.</i>                     | Natural Gas, Propane, Butane  |                                     |                             |
| Approvals  |  |                                     |                             |

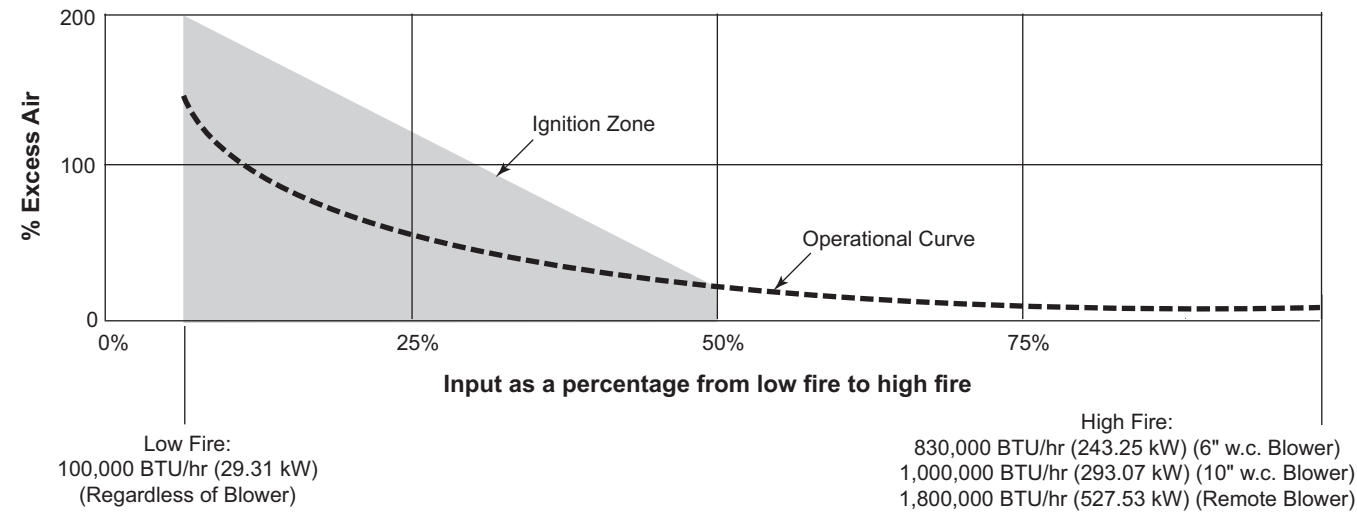
<sup>1</sup> Different fuels require different nozzles and orifices.

<sup>2</sup> See Design Guide 330 for more information about typical fuel composition and properties.

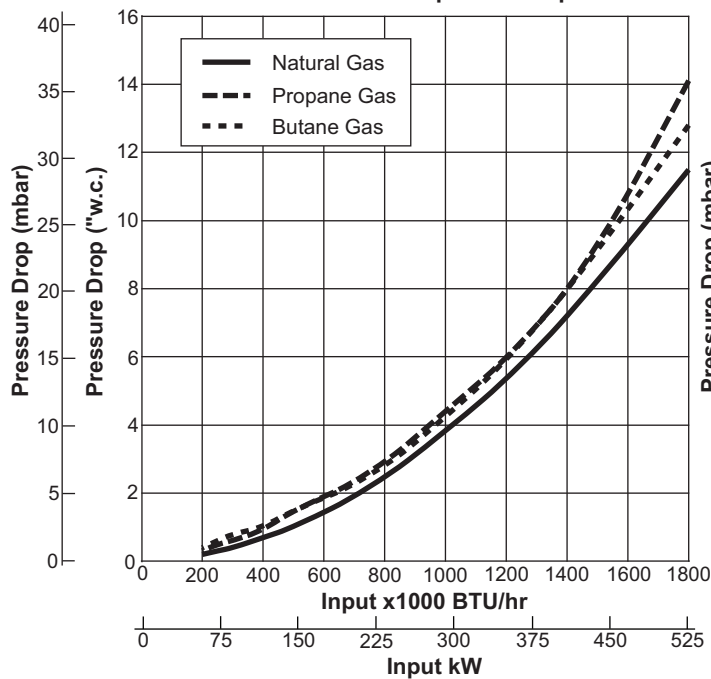
- All information is based on laboratory testing with a tube effective length of 29.6 feet (9.0 m). Different tube sizes and conditions may affect the data.
- All information is based on standard tube design. Changes in the tube will alter performance and pressures.
- All inputs based upon gross calorific values (HHV).
- Eclipse reserves the right to change the construction and/or configuration of our products at any time without being obliged to adjust earlier supplies accordingly.
- Plumbing of air and gas will affect accuracy of orifice readings. All information is based on generally acceptable air and gas piping practices.
- Packaged blower performance data based on 60 Hz.

Performance Graphs

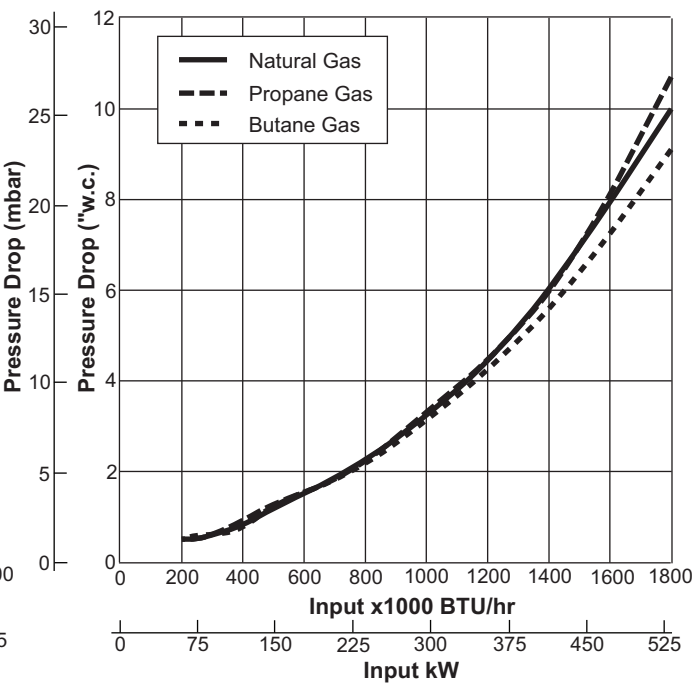
Typical Operational Curve & Ignition Zone  
(Natural Gas, Propane, & Butane)



Gas Orifice  $\Delta p$  vs. Input  
Measured from Tap "B" to Tap "D"

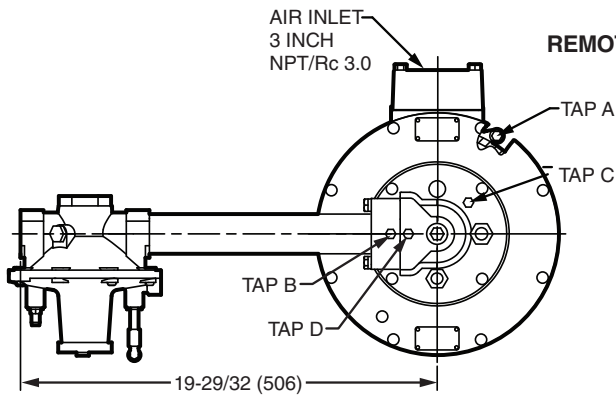
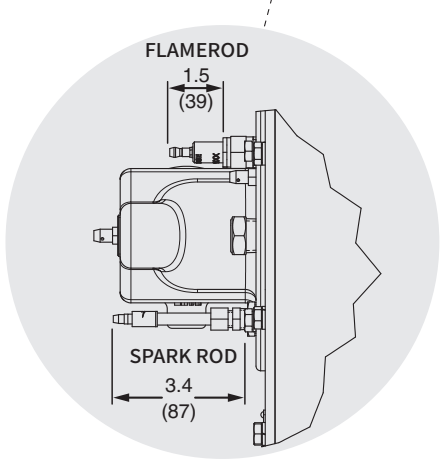
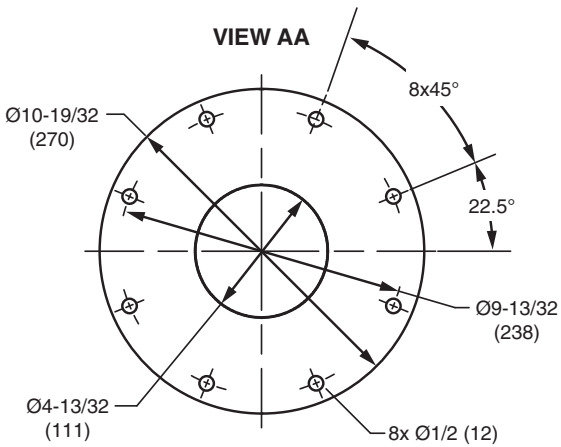
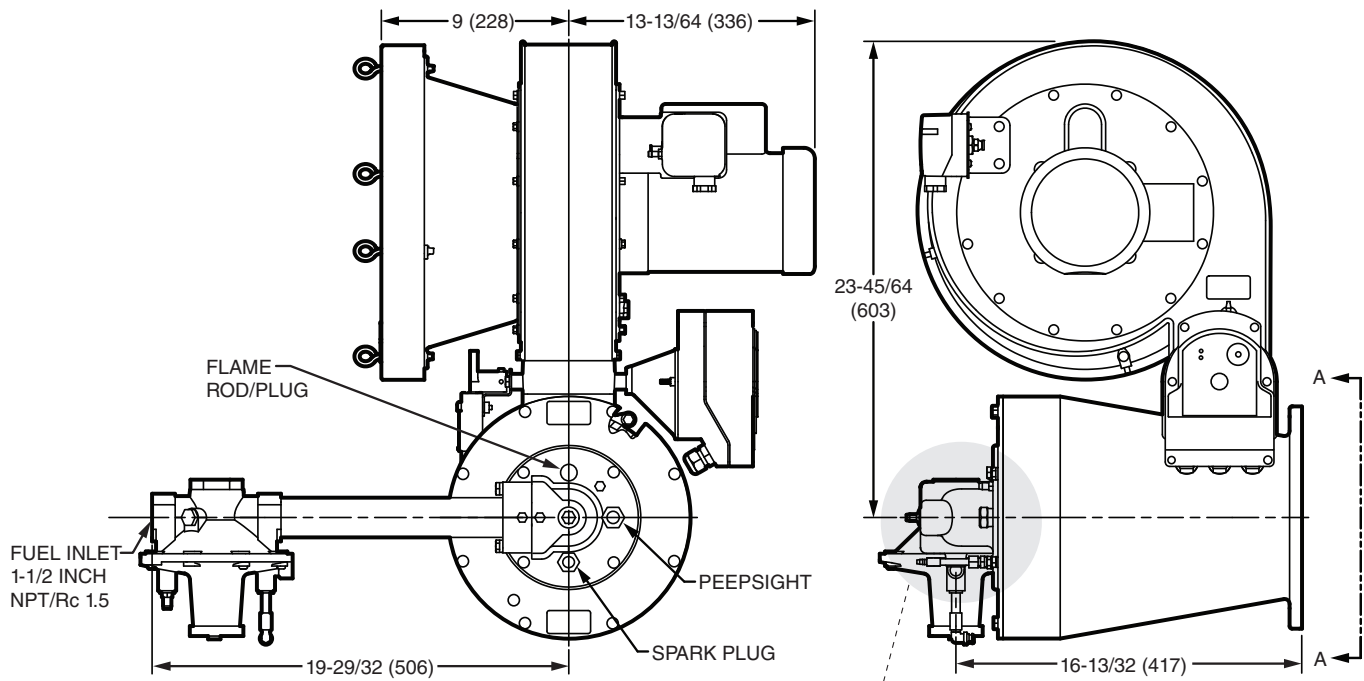


Air Orifice  $\Delta p$  vs. Input @ 3%  $O_2$   
Measured from Tap "A" to Tap "C"

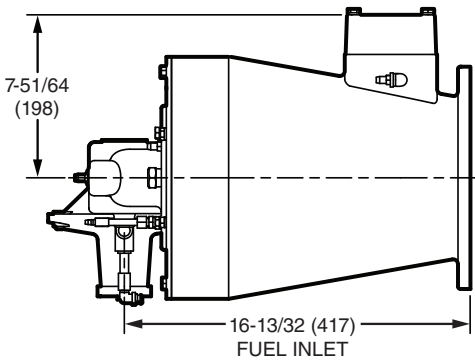


# Dimensions & Specifications

Dimensions in inches (mm)



## REMOTE BLOWER



NOTE: DIMENSIONS CORRESPOND TO LARGEST BLOWER CONFIGURATION

### **For More Information**

The Honeywell Thermal Solutions family of products includes Honeywell Combustion Safety, Honeywell Combustion Service, Eclipse, EXOTHERMICS, HAUCK, Kromschöder and MAXON. To learn more about our products, visit [ThermalSolutions.honeywell.com](http://ThermalSolutions.honeywell.com) or contact your Honeywell Sales Engineer.

### **Honeywell Process Solutions**

Honeywell Thermal Solutions (HTS)

Eclipse Inc.

1665 Elmwood Rd.

Rockford, IL 61103

United States

T +1 815 877 3031

[www.ThermalSolutions.honeywell.com](http://www.ThermalSolutions.honeywell.com)

® U.S. Registered Trademark  
© 2018 Honeywell International Inc.  
32-00107-1 M.S. Rev. 09-18  
Printed in United States

